

The Transformation of learning Spaces at the University of Central Florida

Redesign Alliance February 23, 2009

*Dr. Joel L. Hartman, Vice Provost & CIO
University of Central Florida*

From Classrooms to Learning Spaces

- An enterprise-wide approach
- New facilities design and construction
- Classroom Improvement Program
- Today: 94% of all classrooms and auditoria are equipped with full multimedia instructional resources

Design Rationale

- Make “the box” transparent to all forms of information
 - data – local and network
 - voice
 - video – videoconferencing, web conferencing
 - classroom response technology
 - wired and wireless network access

Media-Rich Learning Spaces

- Standard design across campus
- All are touch-panel controlled
- All are networked (wired and wireless)
- All have access to central servers and other network resources
- Responsive support







Extron RB5 168 21

UNTESTED

115V HQ

4210000 Hi-Fi

RE-202-211-000

PROFESSIONAL MEDIA PROCESSOR

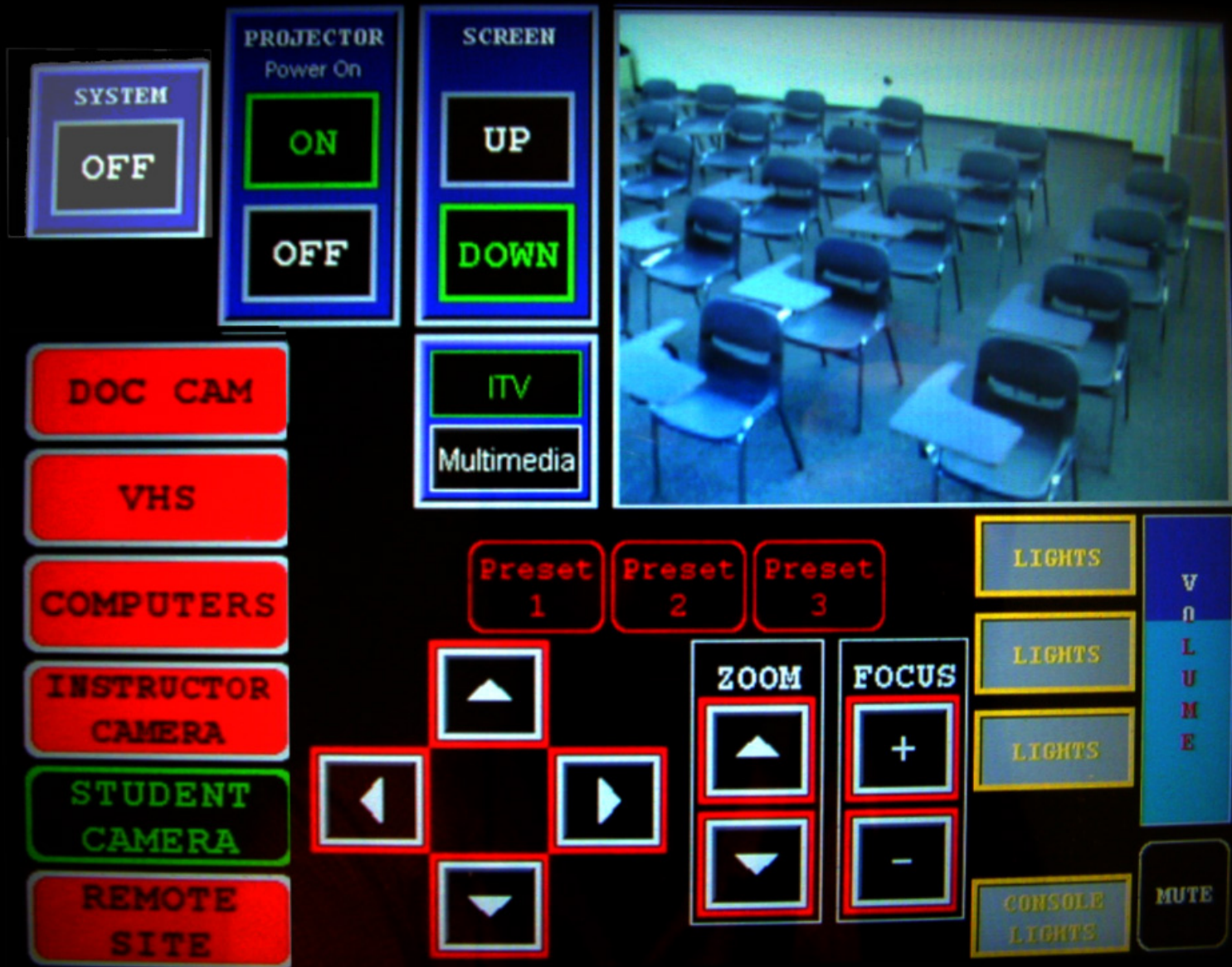
SONY

TUNER BASE LIGHT 140-010

TRC-500050

EXP. NOT. IN PROG.







99

VOLUME



Doc Cam



VCR



DVD



Computer

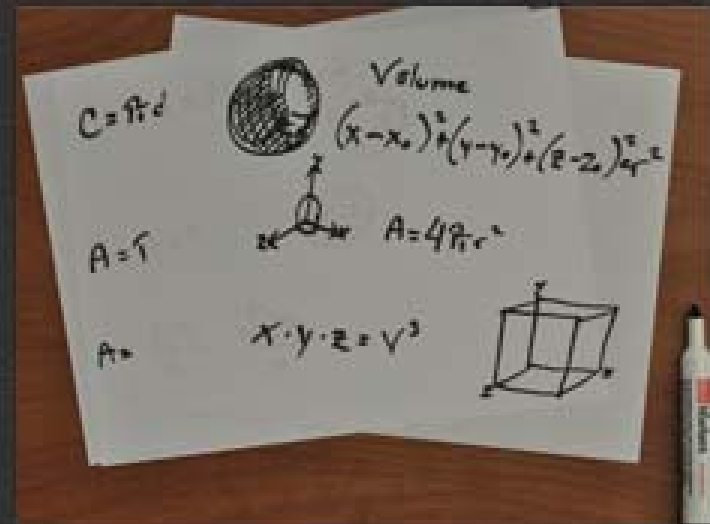


Laptop



Aux

Auto Focus



Preset 1

Preset 2

Preset 3

Preset 4

Preset 5

Preset 6



Power On



Lighting



Graphic EQ



Screen



RoomView

12:00

2



99

VOLUME



Doc Cam



VCR



DVD



Computer



Laptop



Aux

Lamp Hour Warning

Lamp Dim Needs Replacing

No Picture From Projector

Projector Not Working

Projector Not Switching

No Video From VCR

No Video From DVD

No Video From Doc Cam

No Video From Computer

No Video From Laptop

No Audio From VCR

No Audio From DVD

Microphone Not Working

No Audio From Computer

No Audio From Laptop

Cancel Help Requests

Main Page

Roomview messages appear here

12:00

2





Windows
UNIVERSITY OF CENTRAL FLORIDA
COLLEGE OF SCIENCES
All files saved to this computer will be scanned.
Please seek all files to a removable disk.

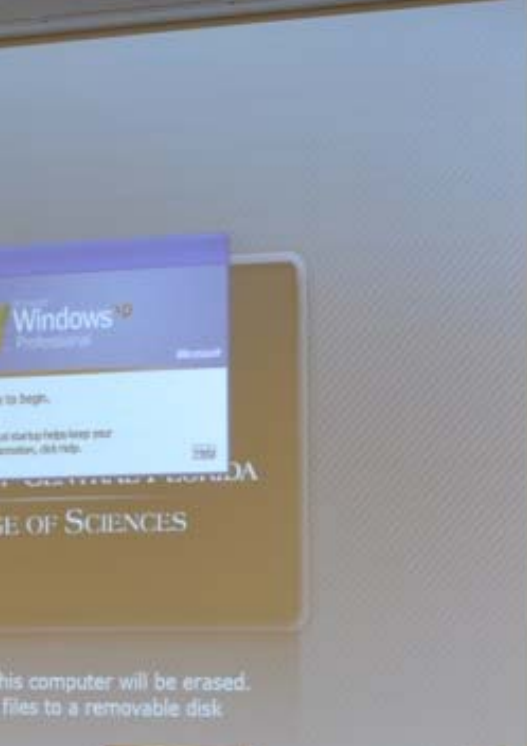
Water Vascular System





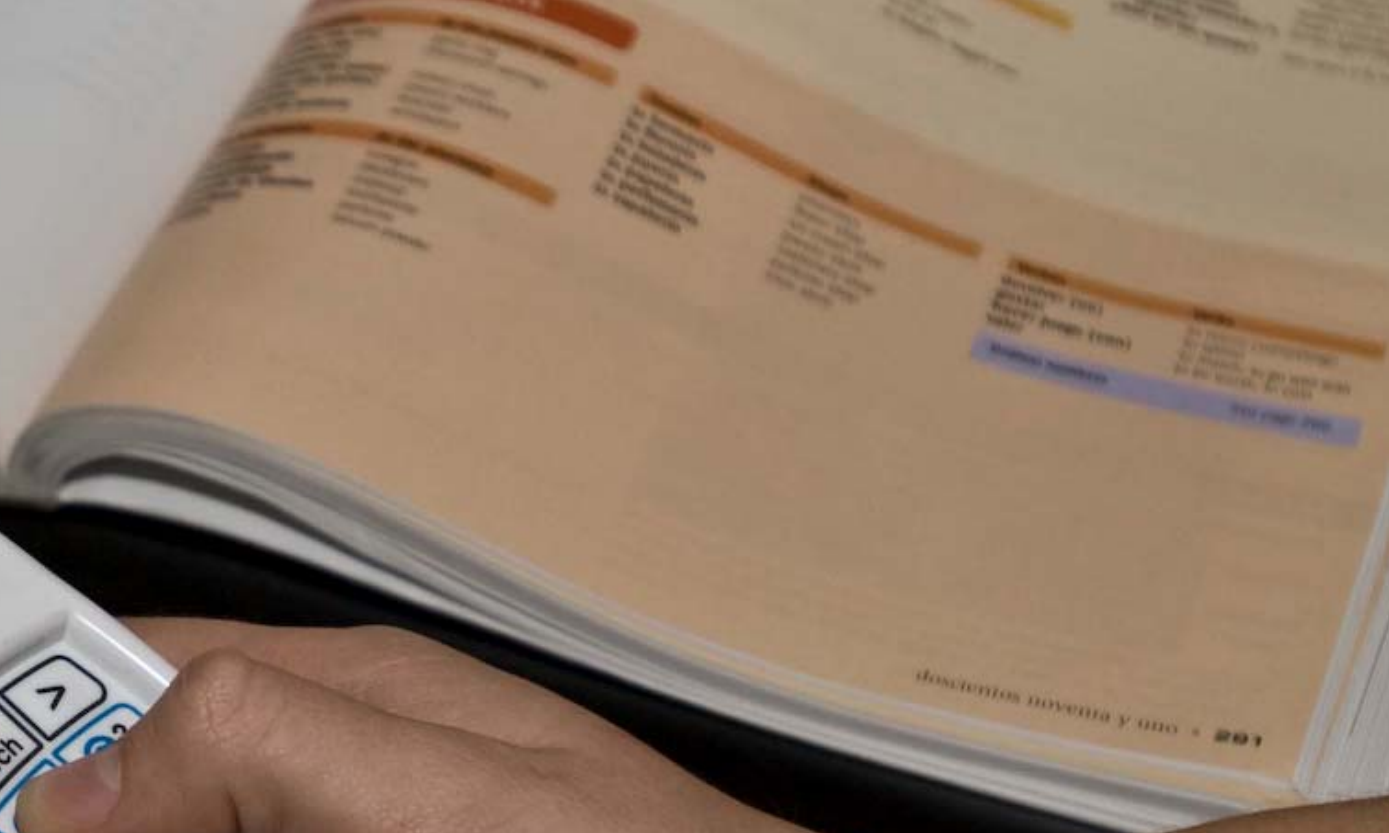


University of North Florida
College of Business
Department of Management
Faculty of Business



All data on this computer will be erased.
Save any files to a removable disk.





documentos noventa y uno - 102





Specialized Learning Spaces

- ▣ Collaboration classrooms
- ▣ Specialized instructional spaces
- ▣ Social learning environments
- ▣ Math lab



















Account Assignment Categories



- Account assignment category is a field on the purchasing document line item that indicates what type of account assignment object the material or service will be assigned to
- Examples include:
 - K – Cost Center
 - A – Asset
 - P – Project
 - F – Production Order
- If you enter an account assignment category then you are required to enter a cost object (e.g. cost center)





The Software Development Process

- Programming language
- Amount of computer programming
- Programmer
- Time and resources that go into the project (including hardware)
- Complexity of the program
- Number of users of the program
- Number of computers that will be used to run the program
- Number of computers that will be used to store the data

The Software Development Process

- Programming language
- Amount of computer programming
- Programmer
- Time and resources that go into the project (including hardware)
- Complexity of the program
- Number of users of the program
- Number of computers that will be used to run the program
- Number of computers that will be used to store the data







QUICKIE

QUICKIE





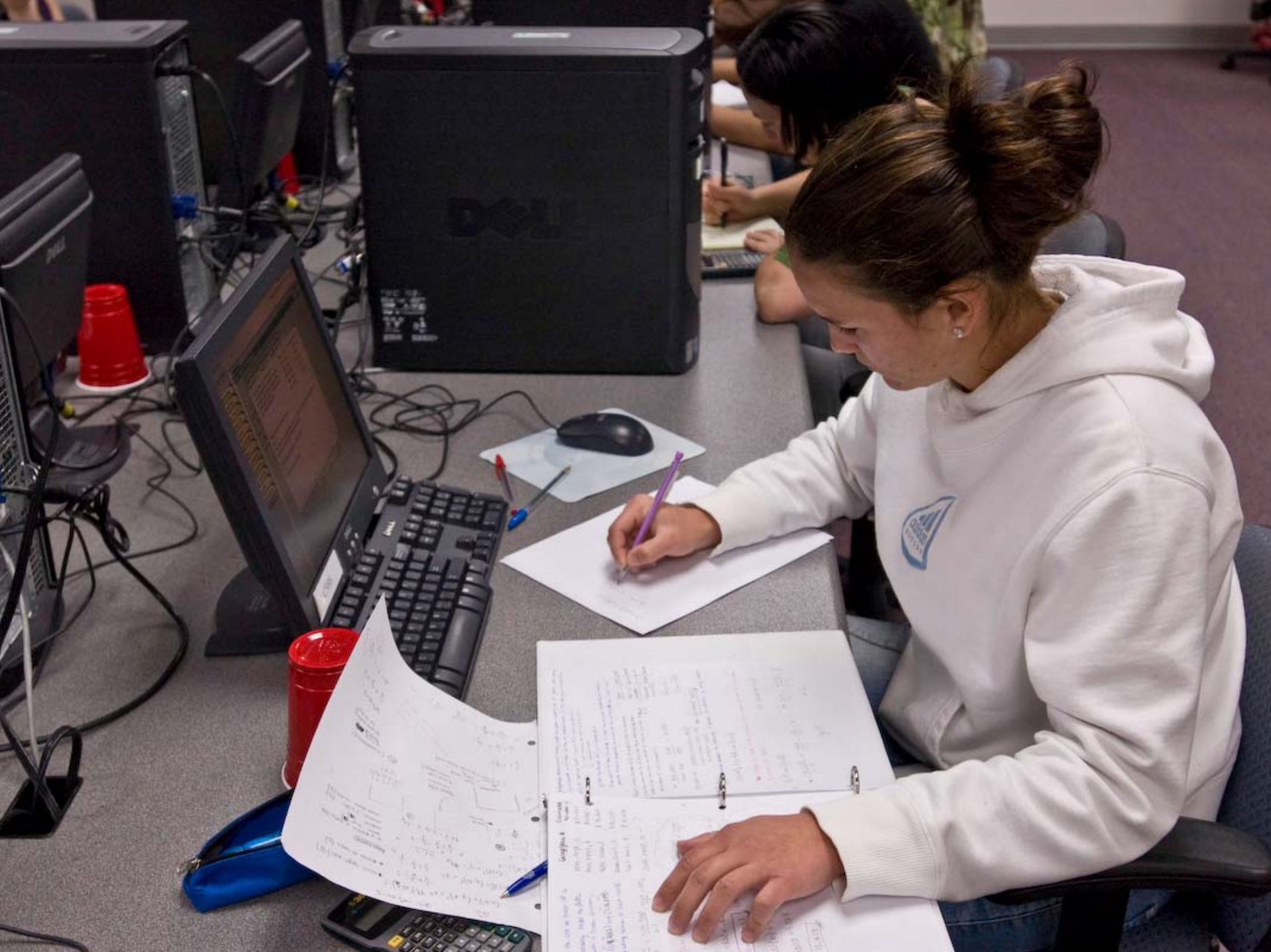
Course Redesign Project

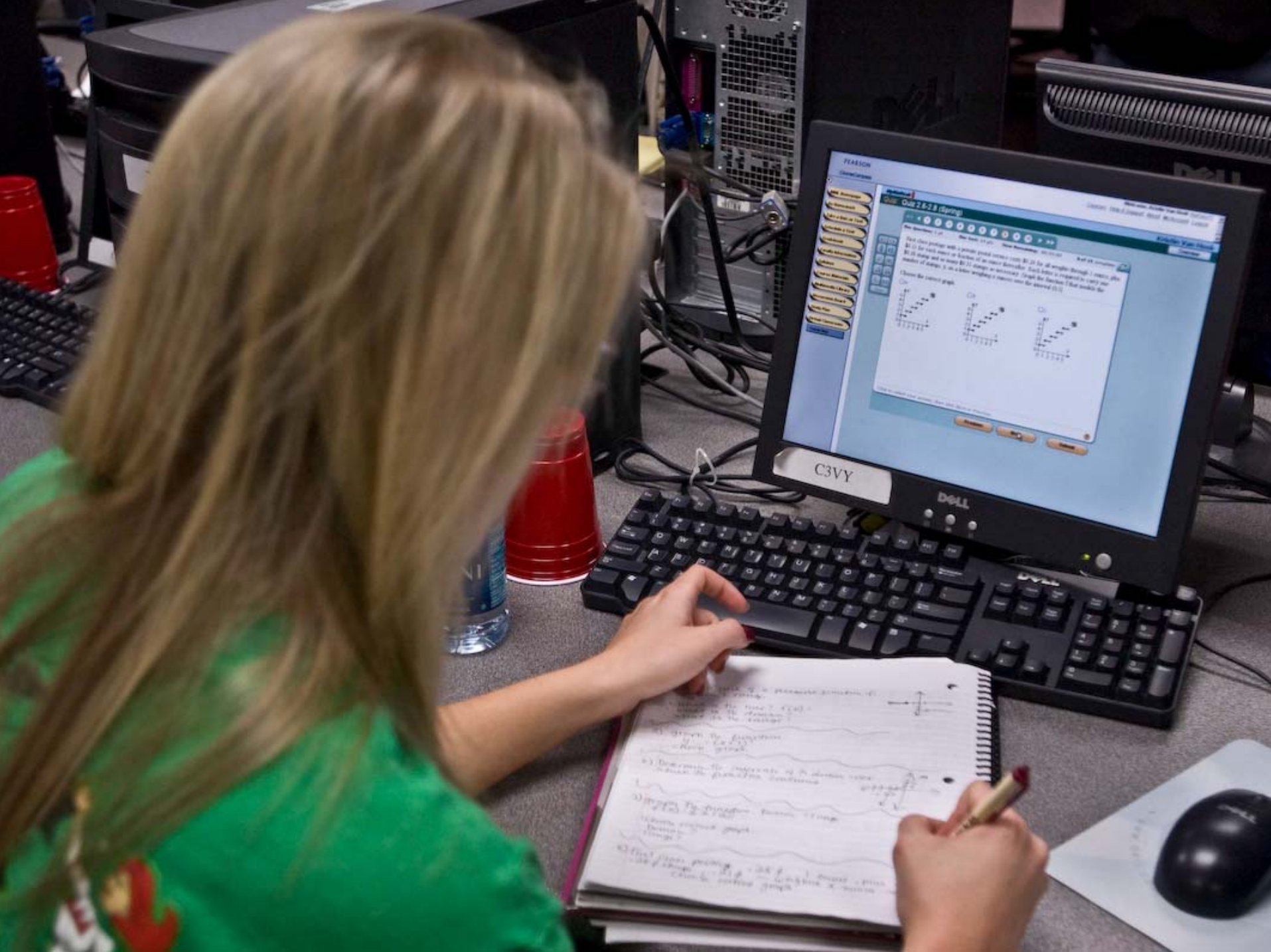
■ College Algebra

- one lecture and 3 hours/week in math lab
- on-demand assistance 60 hours/week
- students “do math,” rather than “hearing math”
- pass rates increased from 50.2% in fall 07 to 73.4% in fall 08
- dedicated math lab being constructed to expand the project and include calculus









PEARSON

Class/Classroom

Class: **Math 1.6-2.8 (Spring)**

Background: **Graphing**

Task: **Graphing a piecewise function**

Graph the piecewise function $f(x)$ on the coordinate plane. The function is defined by the following rules:

- $f(x) = 2x + 1$ for $x < 1$
- $f(x) = 3$ for $x = 1$
- $f(x) = x^2 - 1$ for $x > 1$

Graph the function. Label the axes and the graph.

On Off On

Graph the piecewise function $f(x)$ on the coordinate plane. The function is defined by the following rules:

- $f(x) = 2x + 1$ for $x < 1$
- $f(x) = 3$ for $x = 1$
- $f(x) = x^2 - 1$ for $x > 1$

Graph the function. Label the axes and the graph.

On Off On



REVALUE
YOUR CARD
at this NID
lookup station

NO SMOKING

NO SMOKING

Future Projects

- English writing lab
- Speech
- Virtual PC labs



AdvisorTeam.COM presents

The Keirsey Temperament Sorter

Please provide some background information before we begin.

Married	<input type="checkbox"/> Married w/ Children	Admission	<input type="checkbox"/> Admission	Completion	<input type="checkbox"/> Completion
Gender	<input type="checkbox"/> Male	Completion	<input type="checkbox"/> Completion	Admission	<input type="checkbox"/> Admission
Age	<input type="checkbox"/> 18-24	Admission	<input type="checkbox"/> Admission	Completion	<input type="checkbox"/> Completion
Country	<input type="text" value="United States"/>	Admission	<input type="checkbox"/> Admission	Completion	<input type="checkbox"/> Completion

